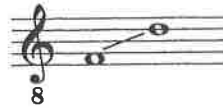


ROCK ISLAND LINE

Vocal
Range



6 - Vocal Demo

33 - Track

Traditional
Arranged by RUTH ELAINE SCHRAM

Lightheartedly ($\text{♩} = \text{ca. } 132$)

5

mf

I say the

9

Rock Is - land Line is a might - y good road, I say the

13

Rock Is - land Line is the road to ride. Oh, yes the

17

Rock Is - land Line is a might - y good road. If you

21

want to ride it, you will go like you're a - fly - in'; buy your

25

tick - et at the sta - tion on the Rock Is - land Line. I

29

8 know I'm right when I say it's fine; it's

33

8 real - ly great to ride on the Rock Is - land Line.

34

37

8 I say the

41

8 Rock Is - land Line is a might - y good road, I say the

8 Rock Is - land Line is the road to ride. Oh, yes the

This system contains the first two lines of music. The vocal line starts with a treble clef, a key signature of two flats (B-flat and E-flat), and a common time signature. The lyrics are "Rock Is - land Line is the road to ride. Oh, yes the". The piano accompaniment consists of a grand staff with treble and bass clefs, featuring chords and moving lines in both hands.

8 Rock Is - land Line is a might - y good road. If you

This system contains the next two lines of music. The vocal line continues with the lyrics "Rock Is - land Line is a might - y good road. If you". The piano accompaniment continues with similar harmonic support.

8 want to ride it, you will go like you're a - fly - in'; buy your

This system contains the third two lines of music. The vocal line has the lyrics "want to ride it, you will go like you're a - fly - in'; buy your". The piano accompaniment continues.

35

8 tick - et at the sta - tion on the Rock Is - land Line.

This system contains the final two lines of music. The vocal line concludes with the lyrics "tick - et at the sta - tion on the Rock Is - land Line.". The piano accompaniment concludes with a final chord. A circled number "35" is positioned above the vocal line.

61

grad. cresc.

8
Want to ride it? Go like you're a fly - in'?

grad. cresc.

Detailed description: This system contains measures 61 through 64. The vocal line (treble clef) starts with a half note 'Want', followed by quarter notes 'to', 'ride', and 'it?'. There is a whole rest for two measures, then quarter notes 'Go', 'like', 'you're', 'a', and a half note 'fly - in'? with a fermata. The piano accompaniment (grand staff) features a 'grad. cresc.' marking. The right hand plays chords, and the left hand plays a simple bass line.

65

f

8
Tick - et at the sta - tion on the Rock Is - land Line...

f

Detailed description: This system contains measures 65 through 68. The vocal line (treble clef) starts with a half note 'Tick - et', followed by quarter notes 'at', 'the', 'sta - tion', and a half note 'on the'. There is a whole rest for two measures, then quarter notes 'Rock', 'Is - land', and a half note 'Line...' with a fermata. The piano accompaniment (grand staff) features a '*f*' marking. The right hand plays chords, and the left hand plays a simple bass line.

69

8
On the Rock Is - land Line!

vd

Detailed description: This system contains measures 69 through 72. The vocal line (treble clef) starts with a half note 'On', followed by quarter notes 'the', 'Rock', and a half note 'Is - land'. There is a whole rest for two measures, then a half note 'Line!' with a fermata. The piano accompaniment (grand staff) features a '*vd*' marking. The right hand plays chords, and the left hand plays a simple bass line.